

Removing Abnormal Pressure (Low)

Version V1.0 2023.08.22

All the samples, controls, calibrators, reagents, wastes and areas contacted them must be regarded as potentially infectious. Wear proper personal protective equipment (eg. gloves, protective garments, etc) and follow safe laboratory procedures when handling them in the laboratory.

The liquid leaked from analyzer is potentially infectious if leakage happened in the analyzer.

Description:

Abnormal Pressure (Low) can't be removed automatically by the "Clear" button.

Trouble Diagnosis:

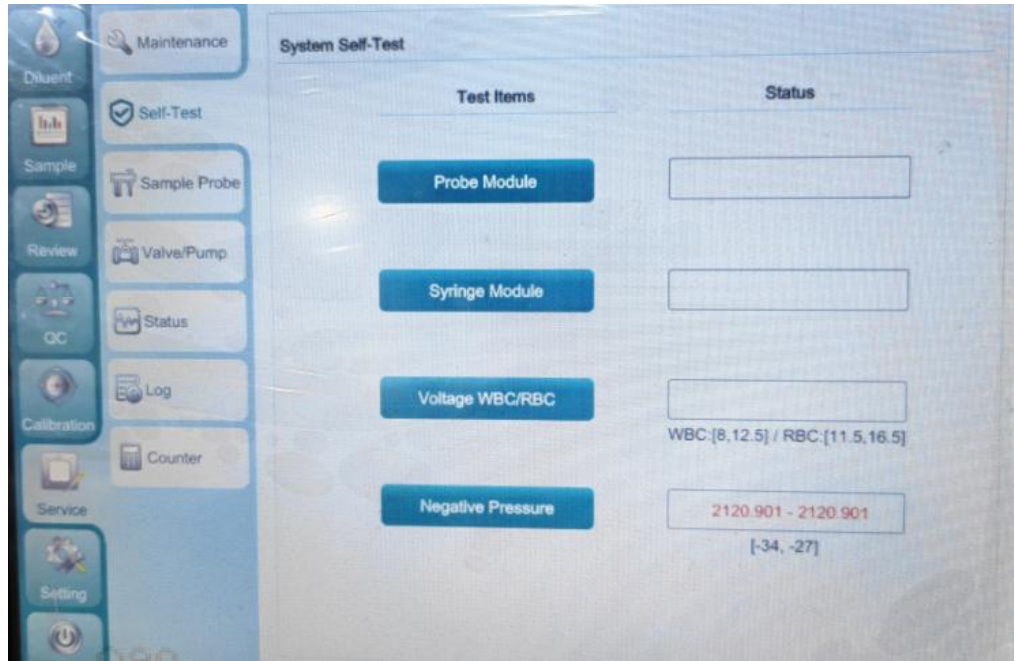
- 1、 Waste Pump Assembly working abnormal or blocked.
- 2、 Air leakage in Negative-Pressure chamber assembly.
- 3、 Three Way Valve working abnormal.
- 4、 Two Way Valve working abnormal.

Troubleshooting(customers):

- 1、 Click "Clear" button. Machine will automatically clear this error. If the error can't be removed, please contact the service engineer.
- 2、 If the error has been eliminated, please use control or calibration to test for several times to check repeatability performance.

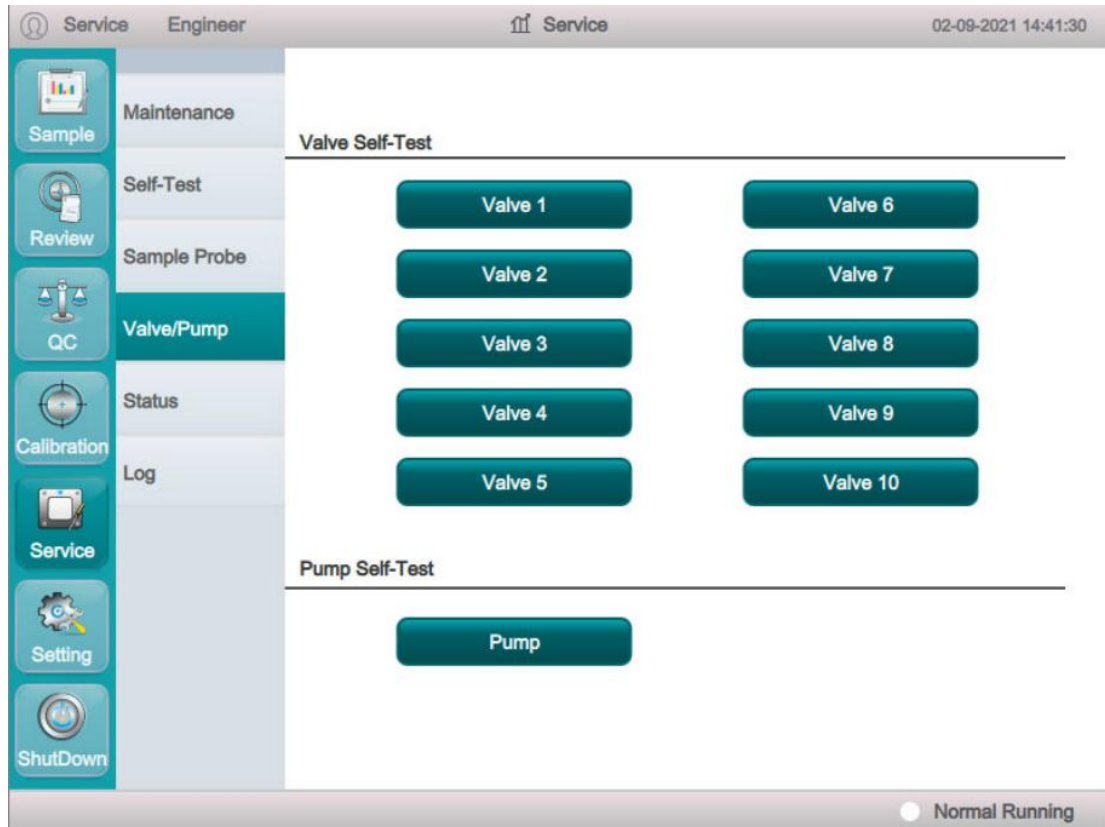
Troubleshooting(service engineer)

1、 Enter Self-Test interface and check current Negative Pressure value.



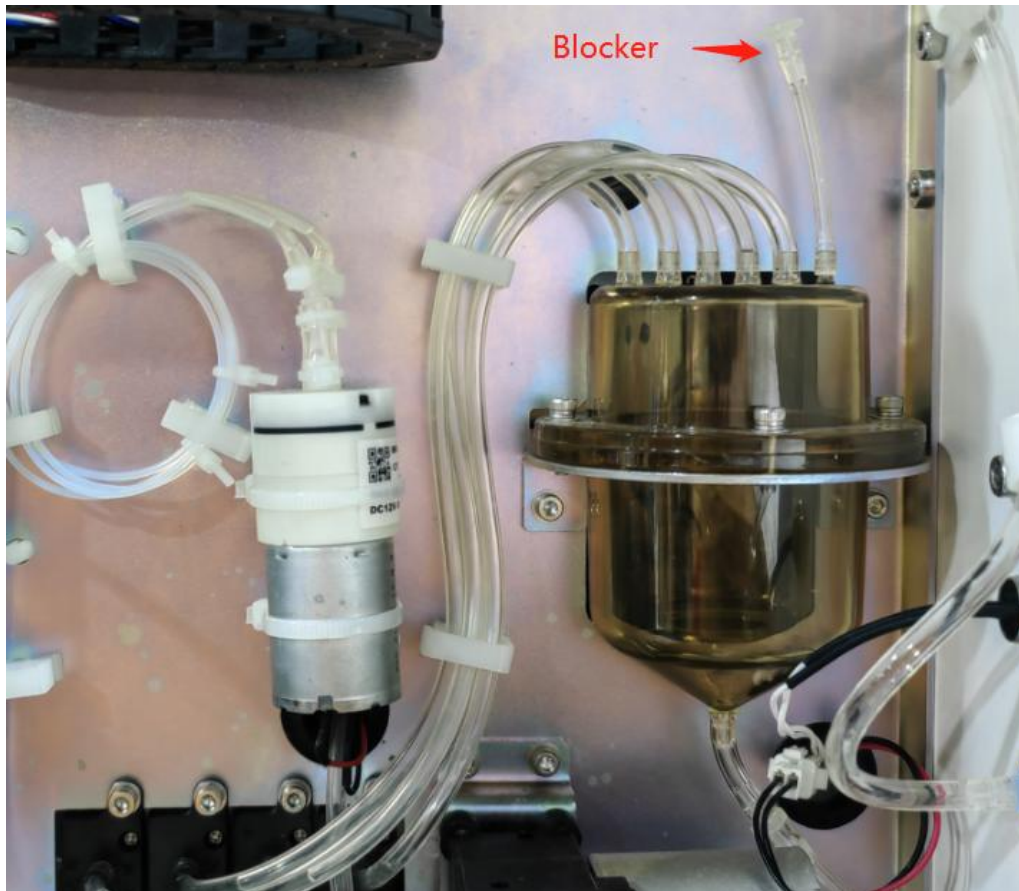
If negative pressure is out of the limitation range, please move to step 2.

2、Click “Service” → “Valve/Pump” button to enter Valve Self-Test page for checking three-Way & two-Way valve and waste pump. Technician can judge if the valves or pump are working normally or not from the sound of switch by clicking the corresponding button for valves or pump.



If pump or valves both work normally, please move to step 3.

3、 Open the right mental cover to find the Negative-Pressure chamber assembly. Perform background test and observe whether air leakage from chamber tubing set or not.



4、 Check the tubes connected with RBC and WBC count chamber for dilutor. If there is much bubble in the tube, it means that some position is leaked. We need to check the tubes and valves to confirm the problems and replace the broken parts.